



ISO 9001:2015

“EVERY JOB IS A REFLECTION OF THE PERSON WHO DOES IT”

Our Mission

“ Collaboration is a key part of the success of any organization, executed through a clearly defined vision and mission and based on transparency and constant communication. ”

About Us

“ AQUA Engineering, a partnership firm, was established in July 2001. We have gained tremendous experience in a very short span of time by working on various projects. The propensity and ability to undertake any turn key venture is the core strength of AQUA. ”

We Believe in winning Professionals and customer satisfaction and hence the network is expanding day by day. it's the hard work, dedication and professional management leading us towards success.



Precision, meticulous work and diligence in the technical consultancy services and a team of highly experienced, dedicated and professional experts caters to the specifications of the customers.



AQUA is fully equipped unit extending its hands of professionalism, ethics, integrity and experience. Our technologically upgraded machines are marked for their eminence and distinctiveness. The machines are strictly monitored by our technical experts at every level and stage of operation.

ONE STOP SHOP



Services

Best services and assistance pre and post sales.



Customer Satisfaction

Customer Satisfaction is our prime consideration.



Quality

Premier Quality Of Machinery Accessories And Finished Product



Time Efficiency

We believe in delivering our Product on time.

- Economy, Compact and Quality
- MS Sheet Bending and Shearing on CNC.
- R&D wing to develop new and advanced equipments.
- Supply and Installation of turn key project.
- Post sales services and Back office support to cater to all technicalities

Group of Company



Aqua
ENGINEERING

ISO 9001:2015



Aqua
EXPORTS



Labh
engineering



AGNI
ENGINEERING

In-House Facilities

- ▶ Designing & Development
- ▶ Laser Cutting
- ▶ CNC Bending Press
- ▶ Fabrication Process
- ▶ Pre-Treatment & Powder Coating

Manufacturing Setup



We have a world-class manufacturing set-up with 80,000 sq. ft. covered area under one roof with handling facility. Additional separate area of 25,000 sq. ft. for pre-treatment & powder coating and 7,000 sq. ft. separate area for machine shop.

Designing & Development



What is design? Depending on the industry we are talking about, design can have many different definitions. Most generally, "Design" is a process for deliberately creating a product to meet a set of needs. We design the various systems as per customer requirements. Our products are designed to give most efficient performance.

Laser Cutting

- Laser Cutting uses a laser to cut materials, and is typically used for industrial manufacturing applications. A commercial laser for cutting materials involves a motion control system to follow a CNC or G-code of the pattern.
- We have installed CNC Laser machines Co2 Laser Cutting Machine with double pallets loading system manufactured by Sirius from Germany. A total three machine are available of 3 KW laser. Laser cutting capacity is up to 25 mm MS & 12 mm SS.





The folded sheet metal bending machine has high productivity and high working accuracy, using different shapes of the upper and lower mold, can be bent into various shapes artifacts, stroke at a time can be to a bending forming of sheet metal, after a lot of bending can obtain more complex in the shape of the workpiece, when equipped with the corresponding equipment, can also make a punch.



- Fabrication in manufacturing terms is creation of machines, structures and part by cutting, welding and assembling various raw material.
- For fabrication we use MIG welding machines made by ESAB. We also have Argon and Arc welding facilities available for MS and SS Sheet

Pre-Treatment & Powder Coating



Four Tank pre-treatment & powder coating plant is installed in our facility. Both plants are conversed to give best quality powder coating. Powder coating is an advanced method of applying a decorative and protective finish to materials and products that are used by both industries and consumers.

Our Products

- ▶ Bucket Elevator
- ▶ Screw Conveyor
- ▶ Chain Conveyor
- ▶ Tubular Screw Conveyor
- ▶ Belt Conveyor
- ▶ Z-elevator
- ▶ Pneumatic Slide Gate
- ▶ Manual Slide Gate
- ▶ Motorized Slide Gate
- ▶ Fatka Machine
- ▶ Round Screener
- ▶ Storage Silo
- ▶ Storage Bin
- ▶ Cyclone
- ▶ Airlock
- ▶ Pneumatic Cyclone
- ▶ Atta Chakki
- ▶ Emery Roll
- ▶ Dall Chakki
- ▶ Dall Polisher

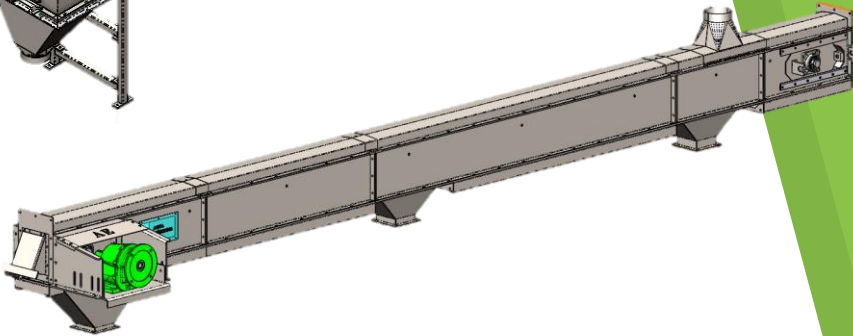
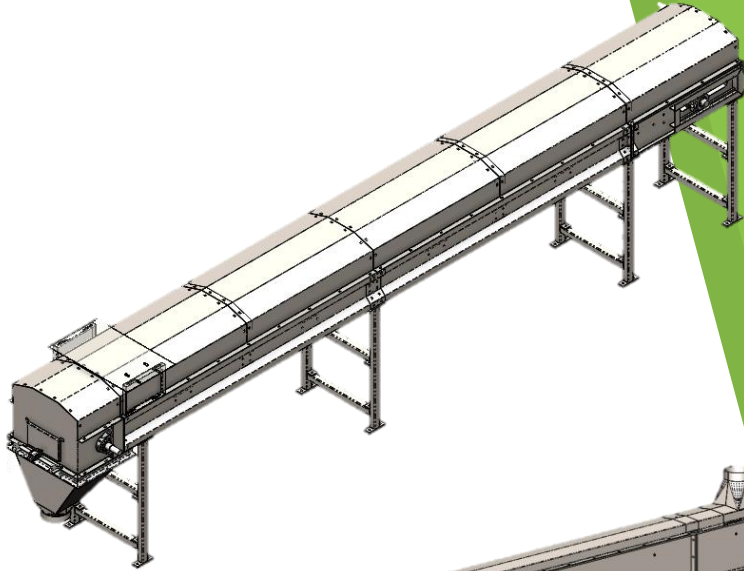
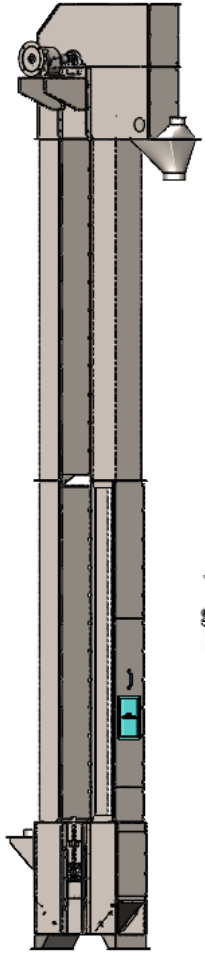
Our Products



Our Products

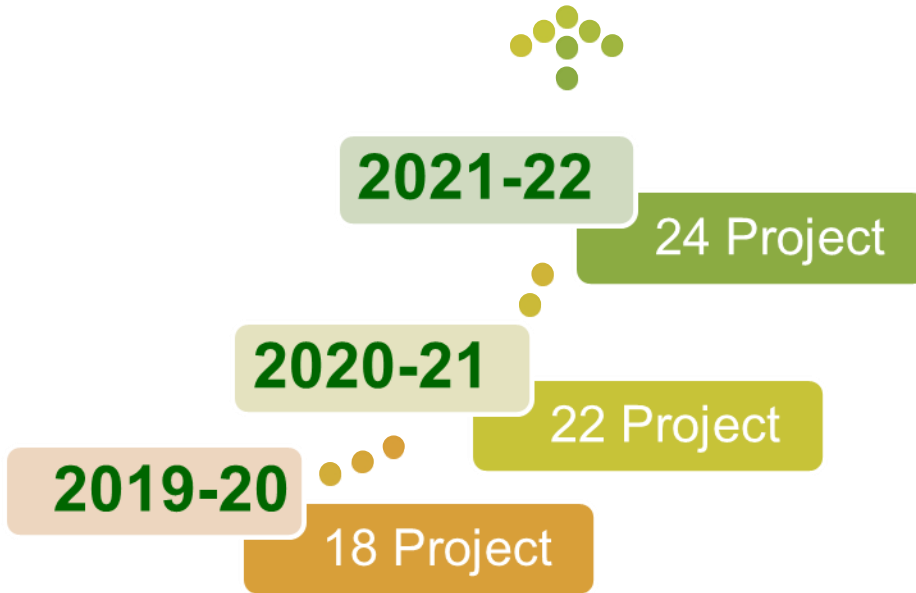


Our Products



Work

History



“If you're walking down the right path and you're willing to keep walking, eventually you'll make progress”

Our Client

We have worked in the past for various major companies for both, rice mills and other Agro. related projects. Some of the major clients for rice mill project includes :

- Reliance Industries
- Adani Wilmar limited
- Wings Agriculture Private Limited
- Sahakar industry
- Armaniya Agro Industry
- Royal Agro Products
- ADM Agro
- Janki Rice Mills
- Mishtann Agro
- Laxmi Proteins
- Shivam Pulse Mills
- Shreenathji Rice Mill
- Jain Farm Fresh
- Murli Industries
- AB Mauri

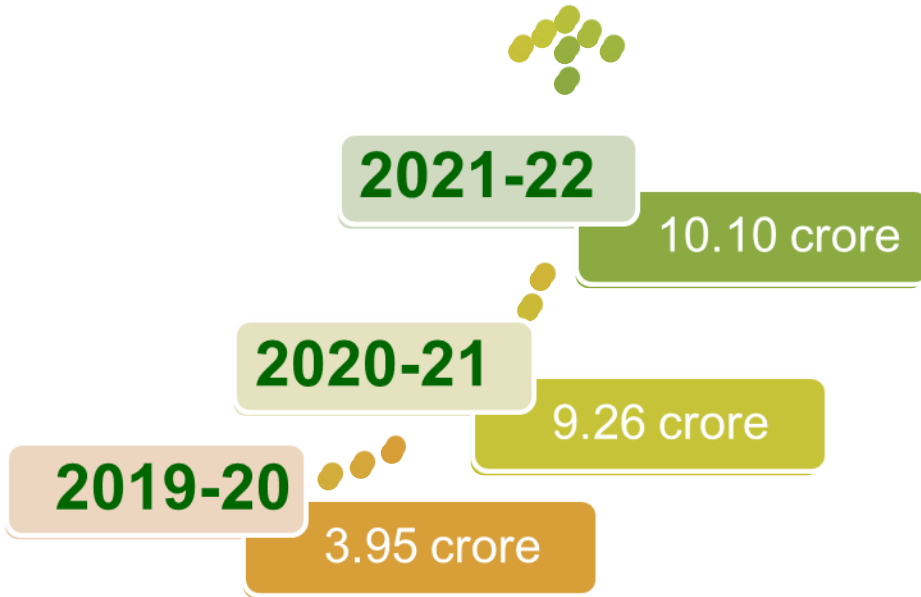
Internationally, we have worked at Export Trading Company (Tanzania), Agro Industries (Aroosha)



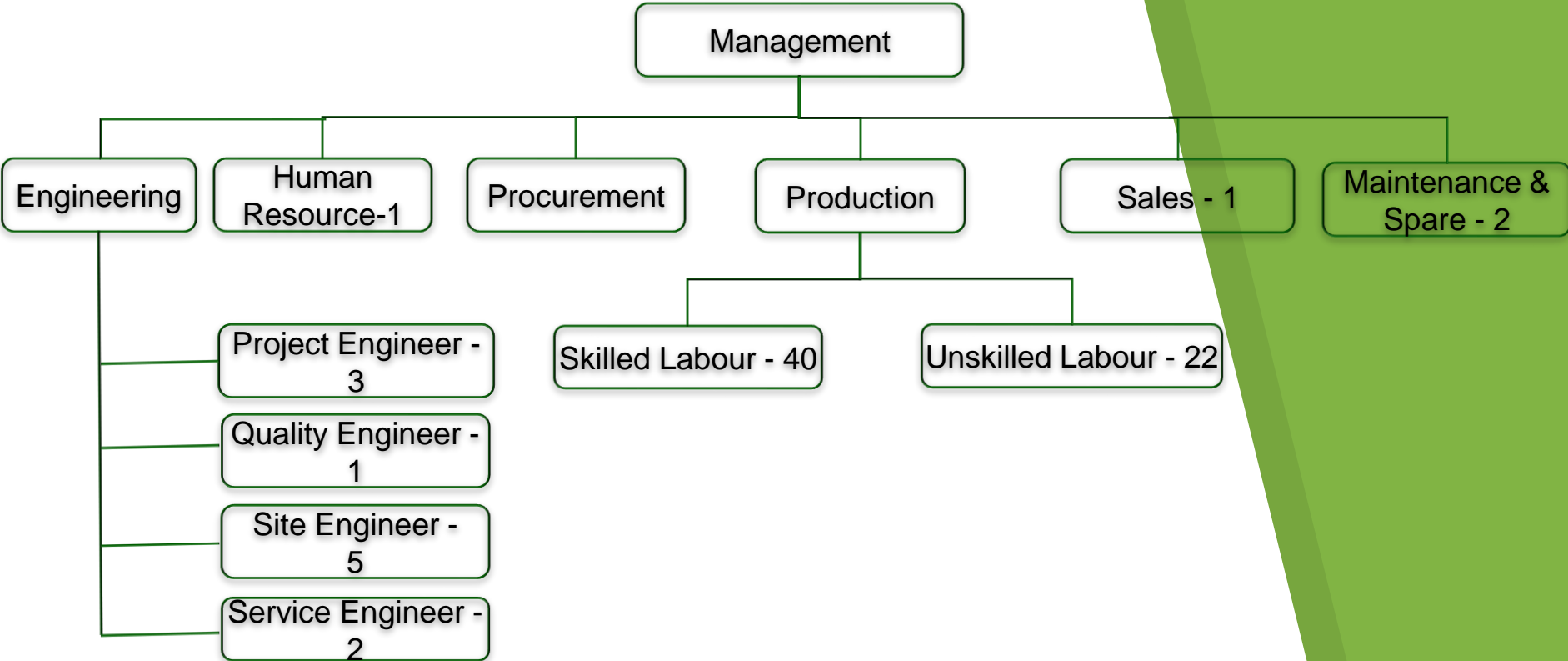
ROYAL
AGRO INDUSTRIES



Our Growth

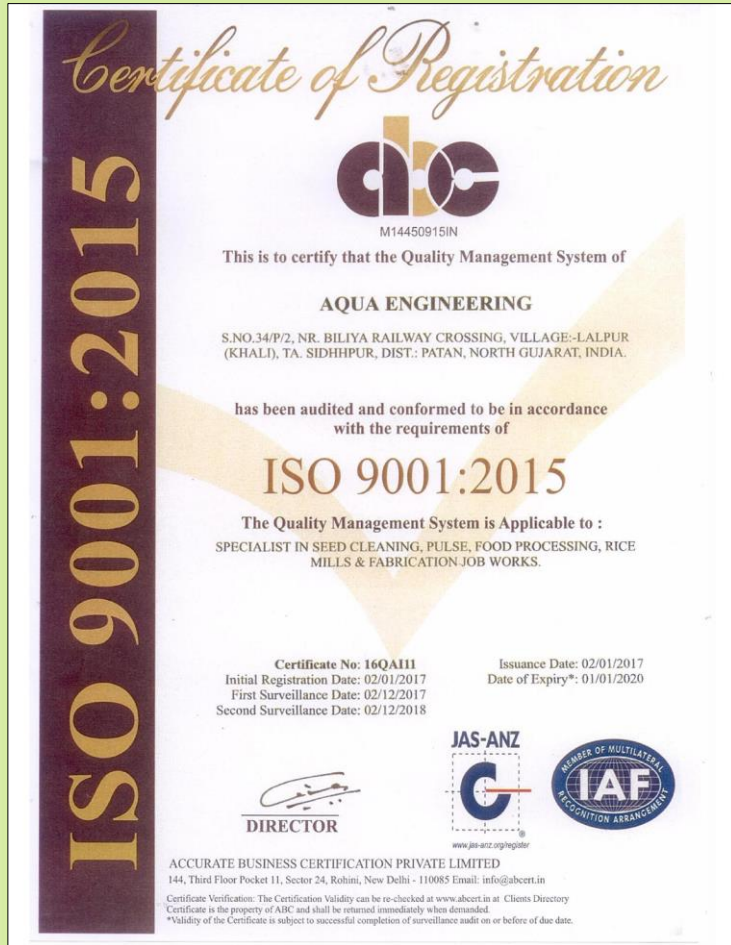


“Strength
And
Growth
come
Only
through
continuous
effort
and
struggle.”



Quality Certificate

➤ Our ISO 9000 Certificate



Contact Us



State Highway, Biliya Railway
Crossing, Khali, Ta. Siddhpur,
Dist.- Patan (N.G.) PIN - 384151



+91 9909016156



aquaengsid@gmail.com
knrawal@gmail.com



<https://www.aquaengindia.com/aquaeng/>



Key Person



Karan Rawal
Marketing Executive

+91 9825322056



Rajesh Patel
Procurement Head

+91 9879683325



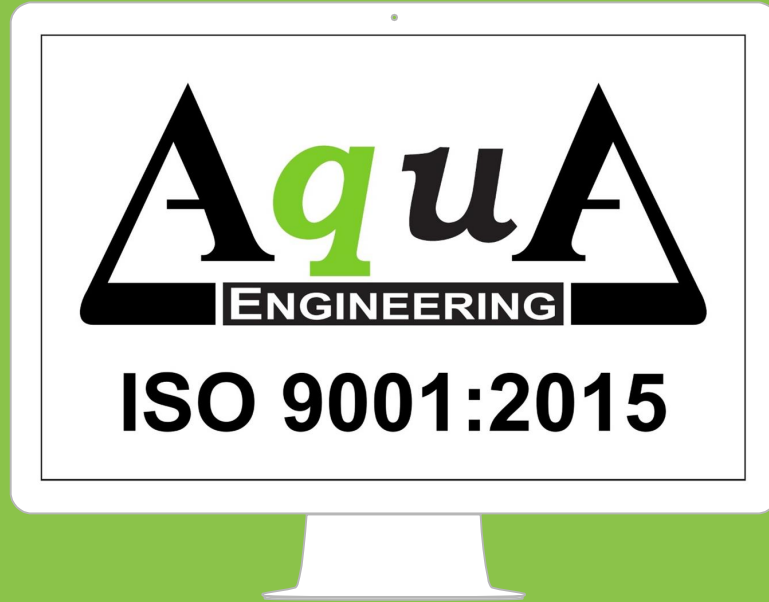
Rakesh Thakor
Engineering Head

+91 9925247536



Mukesh Patel
Spares & Maintenance
Head

+91 9712060667



THANK YOU